



SAFETY RULES

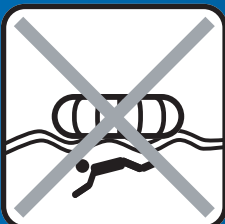


To ensure your SAFETY in the Wibit Sports Park, PLEASE respect the following RULES:

- Only use during the official opening hours!
- Only use in the presence of a lifeguard!
- Do not use in darkness or when there is lightning!
- Do not jump from the Wibit Trampoline, Action Tower XXL etc. onto other objects!
- Use the products responsibly to ensure you don't injure yourself or others!



Ensure there are no people or objects in the water before jumping from any area of the park!



Do not dive underneath the products!



No access to children under the age of 6 years!



Always slide with your feet first and move out of the landing area immediately!



No access to the park with any objects from outside the facility!



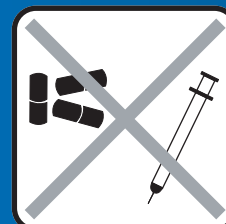
No access to the park with any type of food or drink from outside the facility!



No access to the park having consumed alcohol!



No smoking within the park!



No access to the park having consumed any drugs!



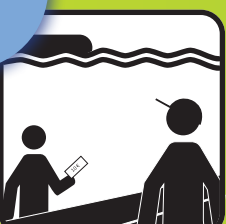
For safety reasons do not access if you are pregnant!



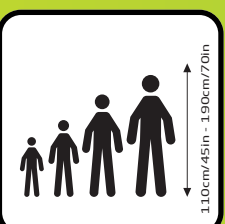
Remove watches, jewelry, keys or other sharp objects before using Wibit!



The park is not responsible for any personal items from users inside or outside the premises of the park!



Only access the park after registration with the operator!



No access to people smaller than 1,10m / 3.6ft!



Swimmers only!



The lifeguard may expel people who endanger their own safety or that of others from the park!



Use of lifejacket is mandatory!



We recommend the use of sun cream throughout playtime!

The operator cannot be held responsible for any accidents that occur due to improper use of the Wibit Sports Park or by not following the Safety Rules above!